

What's New in CA 2E Change Management R8.5

September 24, 2009

Marty Acks, Product Manager, MKS



Speaker Bio

- Marty Acks (macks@mks.com)
- IBM i Product Manager, MKS
- Key CA 2E background:
 - Exposed to Synon/2 in 1986 from demo by Simon Williams
 - Made technical recommendation for Pansophic systems to sell as sole US distributor (pre-dated Synon office in Larkspur) – marketed as Telon/38
 - Co-founded Silvon Software in 1987
 - Architect for CA 2E CM in conjunction with Synon starting in 1991.



MKS Overview

- Publicly held - TSE:MKX
- Application Lifecycle Management (ALM) specialists
- Helping IT organizations managing development for over 20 years
- Fastest organically growing global ALM provider
- Solutions span NT, UNIX, LINUX, mainframe, and IBM i



CA and MKS

- Over 150 active CA 2E CM customers worldwide
- Partners since 1991
- Names have changed, but the commitment remains the same
- CA 2E Change Management
 - Formerly Advantage 2E CM, and COOL: Xtras CM,
 - Jointly developed AND jointly supported
 - Based on MKS's underlying Implementer product
- CA 2E Change Management R8.5 based on Implementer 2009

CA 2E Change Management R8.5 Objectives

- This release delivers on a number of strategic product roadmap initiatives; specifically, it adds significant functional support for the following areas:
 - Enhanced integrations for CA 2E
 - Improved graphical capabilities in RDi (and WDSC)
 - New integration for CA Plex (via ADC Austin)
- Additional improvements in:
 - Security and Auditability
 - Developer Usability
 - Promotion and Deployment
 - Other 3rd party integrations
- Over 175 separate enhancements and fixes

CA 2E Specific Improvements

- CA 2E 8.5 support*
 - Still backwards compatible to 8.0
- Service Programs supported*
- Net change promotion of CA 2E messages and conditions*
- Eliminate locking of run-time condition file during promotion*
 - Allows promotions during day
- Support for SQL
 - Compile No requests now promote correctly
- Concurrent development across multiple environments supported
 - Previously within one environment
- More logical ordering of items on promotion requests*
 - Model Objects listed first then generated objects
- Improved function description on Workbench (Surrogate removed)

* CA 2E 8.5 required

RDi/WDSC Plug-in Key Features

- RDi 7.5 supported
 - RDi 7.1 and WDSC 7.0 still supported
- Direct launch of Debugger using SEPs for ILE debugging
- RSE Screen Designer available
- Add to IBM i projects
- Contextual help added
- Visual differencing and annotated views on main drop down menus
- 32 bit JVM now used on server side
- Improved multilingual support
- IFS improvements
- Numerous usability changes

Security and Audit Focused

- QSECOFR adoption
 - Allow profile other than QSECOFR
 - Profile does not require *SECADM rights
- Create date of promoted objects configurable
 - Date of promotion or compiling (was always date of compiling)
 - Give appearance of MOV OBJ or CRTDUPOBJ behavior
- CHGSYSLIBL use reduced to one obscure case
 - Only QTEMP actually present on promotion job's system library list

Developer Usability

- Environment paths used when rejected from QA
- Archive Recovery available within Work with Objects
- Simplified user defined filters, first introduced in 2008 release

Promotion and Deployment

- Environment Group Selection available in Create Request
 - F4 now available
- Longer creation commands when overridden during promotion
- Improved special command support:
 - New keywords for #OBJTYP, #PROJECTS #ISSUE, #RQSUSR, #JOBUSR, #LCKUSR
- Faster SQL promotions
 - When multiple columns promoted only one Alter Table statement is created
- SQL stored procedures
 - Non-source based improvements

Other 3rd Party Integrations

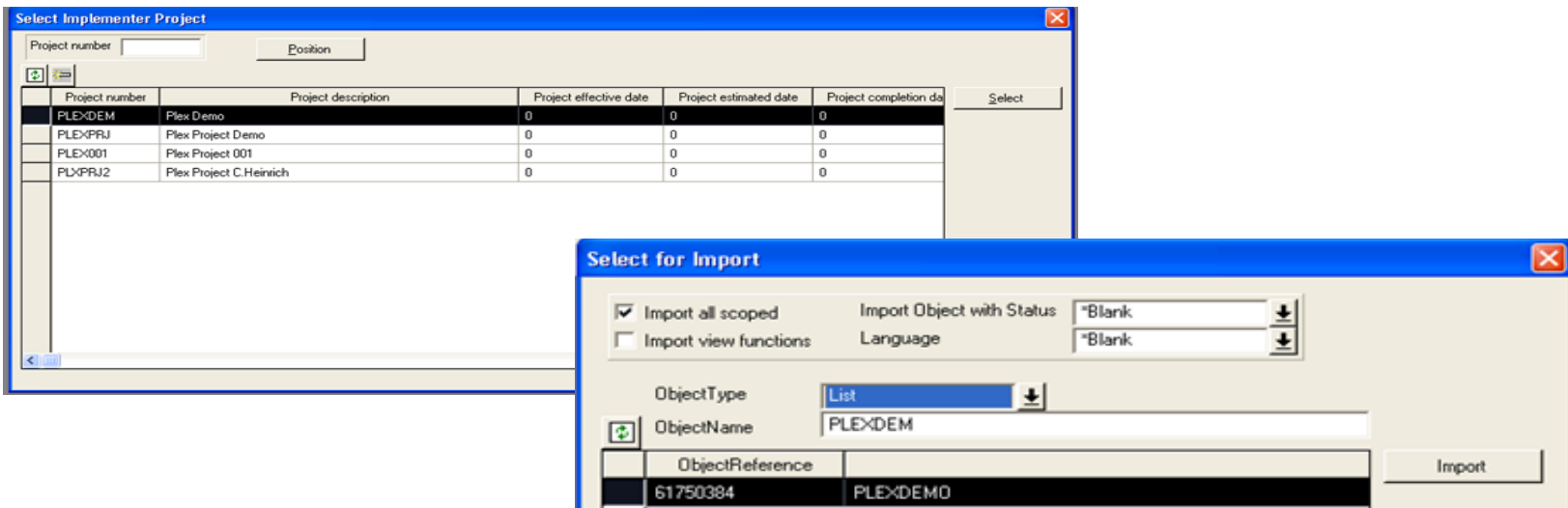
- Lotus Domino
 - Support for non-default locations
 - Support for Domino 5 through 8

MKS Integrity and ALM Support

- Faster release of floating licenses of MKS Integrity
 - Allows for more reasonable license consumption
- New Test Management capabilities in MKS Integrity 2009
- New eclipse and .Net integrations for distributed development
- Modernized web interface

CA Plex

- MKS Connector for Plex now available
- ADC Austin and MKS
 - Leverages technology from ADC Austin and CM First
- Protects your investment in CA 2E CM should you move to Plex
- Works with CA 2E Change Management or Implementer



What's Coming

- Implementer 2010 – probable second half 2010
 - Coordinate with our full MKS Integrity offering
- CA specific – under consideration
 - Web services
 - Utilize obsolete changes
 - PMT support
- Other changes:
 - Localization (Japanese)
 - SQL improvement is top priority
 - Simplified patch installation
- Influencing MKS...

Availability

- Underlying MKS Implementer 2009 is now available
- CA 2E CM 8.5 is also now available from CA
- CA Plex support is also available now from ADC Austin

What is MKS Integrity for IBM i?

- MKS Integrity for IBM i enables organizations committed to the IBM i and i5/OS operating systems to address software change management challenges while keeping business applications running smoothly. Through a workflow-centered approach, MKS Integrity for IBM i manages key development activities, inventories software assets, and enables seamless change control over test and production environments. Unlike other IBM i-centric application lifecycle management (ALM) offerings, MKS Integrity for IBM i is a single enterprise platform that covers all facets of the application lifecycle from IT Help Desk, requirements management, software configuration management, test management and release management.

Upgrading

- Customers who have licensed from CA or CA partner, should contact their local CA or partner representative.
- Customers who licensed through MKS that have an active Customer Care subscriptions will be able to download the upgrade to Implementer 2009 from the MKS Customer Community (www.mks.com/community) or request the upgrade at support@mks.com.
- Customers interested in expanding their ALM capabilities with MKS Integrity for IBM i, can contact should contact MKS or email sales@mks.com.

Contact Us

MKS: www.mks.com

- Marty Acks at macks@mks.com

